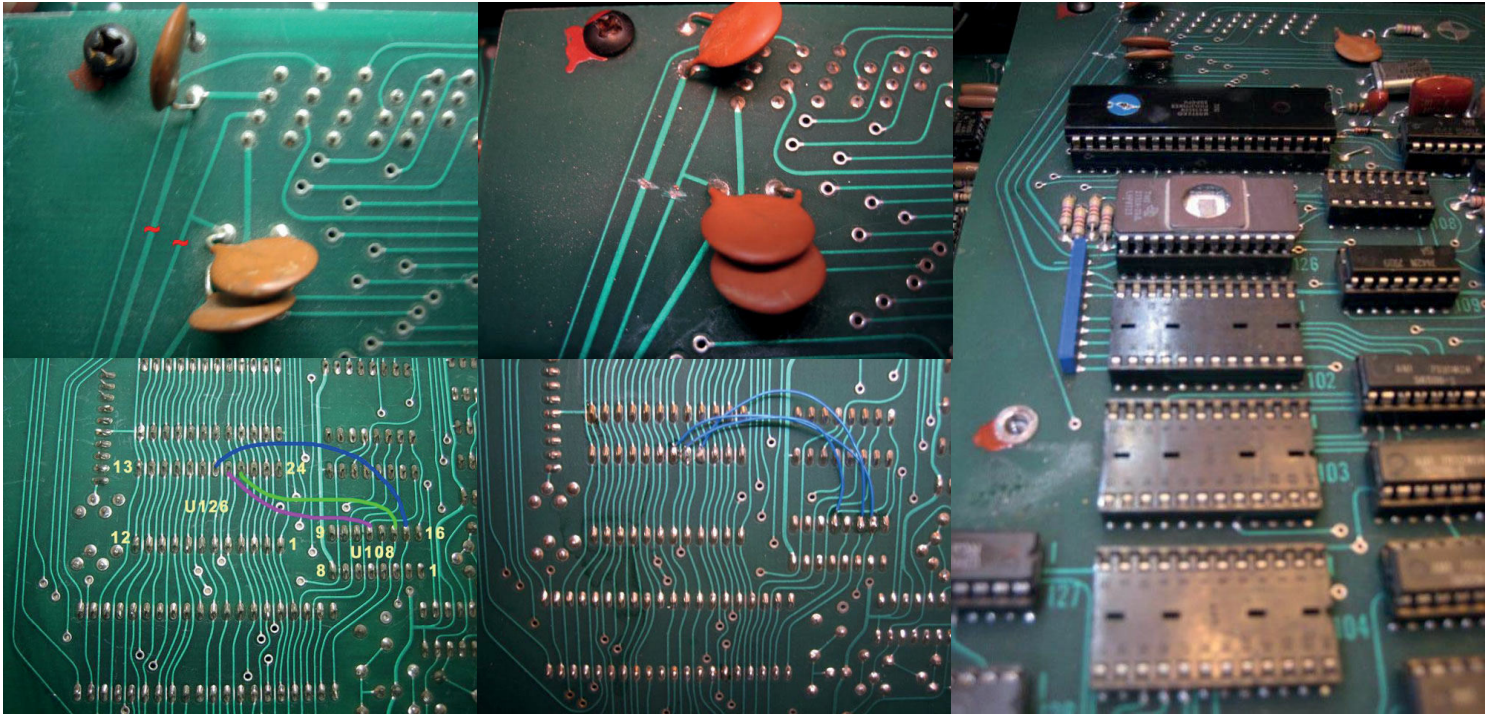


## New EPROM for OB-X with serial number 794801 and above



- Remove 2708 EPROMs from IC sockets U102, U103, and U104
- Remove 7442 decoder from IC socket U108
- Cut -5V and +12V traces on top rear of CPU board as indicated
- Power up unit
- Verify (no -5v @ U126 pin 21) and (no +12v @ U126 pin 19)
- Power off unit
- Connect U108 pin 12 to U126 pin 20
- Connect U108 pin 14 to U126 pin 21
- Connect U108 pin 15 to U126 pin 19
- Insert programmed 2732 EPROM into IC socket U126
- Power up unit, test, and enjoy

### 2732 EPROM address mapping:

- 2708 ROM0 (U104) 0x0000-0x03ff -> 2732 0x0000-0x03ff
- 2708 ROM1 (U103) 0x0000-0x03ff -> 2732 0x0400-0x07ff
- 2708 ROM2 (U102) 0x0000-0x03ff -> 2732 0x0800-0x0bff

OBX rev IB for 2732 EPROM [BIN] - Checksum 000472AD